

RD60

AMC Model 20,3.07 & UP

****THIS MODEL WAS SUPERSEDED BY RD186, CROSSED OUT PARTS NOT AVAILABLE**

PARTS LIST

ITEM #	QTY	DESCRIPTION	PART #	NOTES
01	1	FLANGE CAP	022203	
02	1	CLUTCH GEAR	050402	
03	1	DIFFERENTIAL CASE	011505	
04	1	RETURN SPRINGS (PK OF 4)	150101SP	
05	2	RETAINING PIN SET (PK OF 2)	120302SP	
06	4	SHORT CROSS SHAFT	060303	
07	1	S GEAR THRUST WASHER (PK OF 2)	151003SP	
08	1	PISTON	040103SP	
09	1	BONDED SEAL	160701SP	
10	1	CYLINDER CAP	030127	
11	1	SEAL HOUSING O-RINGS (PK OF 2)	160208SP	1
12	1	CYL CAP RETAINING BOLT (PK OF 8)	200205SP	
13	1	LOCKING TAB (8mm) (PK OF 8)	150401SP	
14	1	TAPERED ROLLER BEARING	160104	2
15	1	SEAL HOUSING KIT	080504SP	
16	1	SHIM KIT	SHK008	
*	1	MASTER SHIM	150320	
17	1	SPLINED SIDE GEAR	SEE NOTE	3
18	1	PINION THRUST WASHER (PK OF 4)	151101SP	
19	4	PINION GEAR	SEE NOTE	3
20	1	SPIDER BLOCK	070401	
21	1	THRUST BLOCK	110506SP	
22	1	SIDE GEAR	SEE NOTE	3
*	1	BULKHEAD FITTING KIT (O-RING TYPE)	170111	
*	1	PUSH-IN FITTING (5mm to 1/8"BSPP)	170201SP	
*	1	AIR LINE (5mm DIA X 6m LONG)	170301SP	
*	1	SOLENOID VALVE (12V)	180103	
*	1	SWITCH	180209SP	
*	1	SWITCH COVER (REAR)	180211SP	
*	1	SWITCH COVER (FRONT)	180210SP	
*	1	CABLE TIE (PK OF 25)	180305	
*	1	OPERATING & SERVICE MANUAL	210200	
*	1	INSTALLATION GUIDE	210260	

* *Not illustrated in exploded view*

NOTES

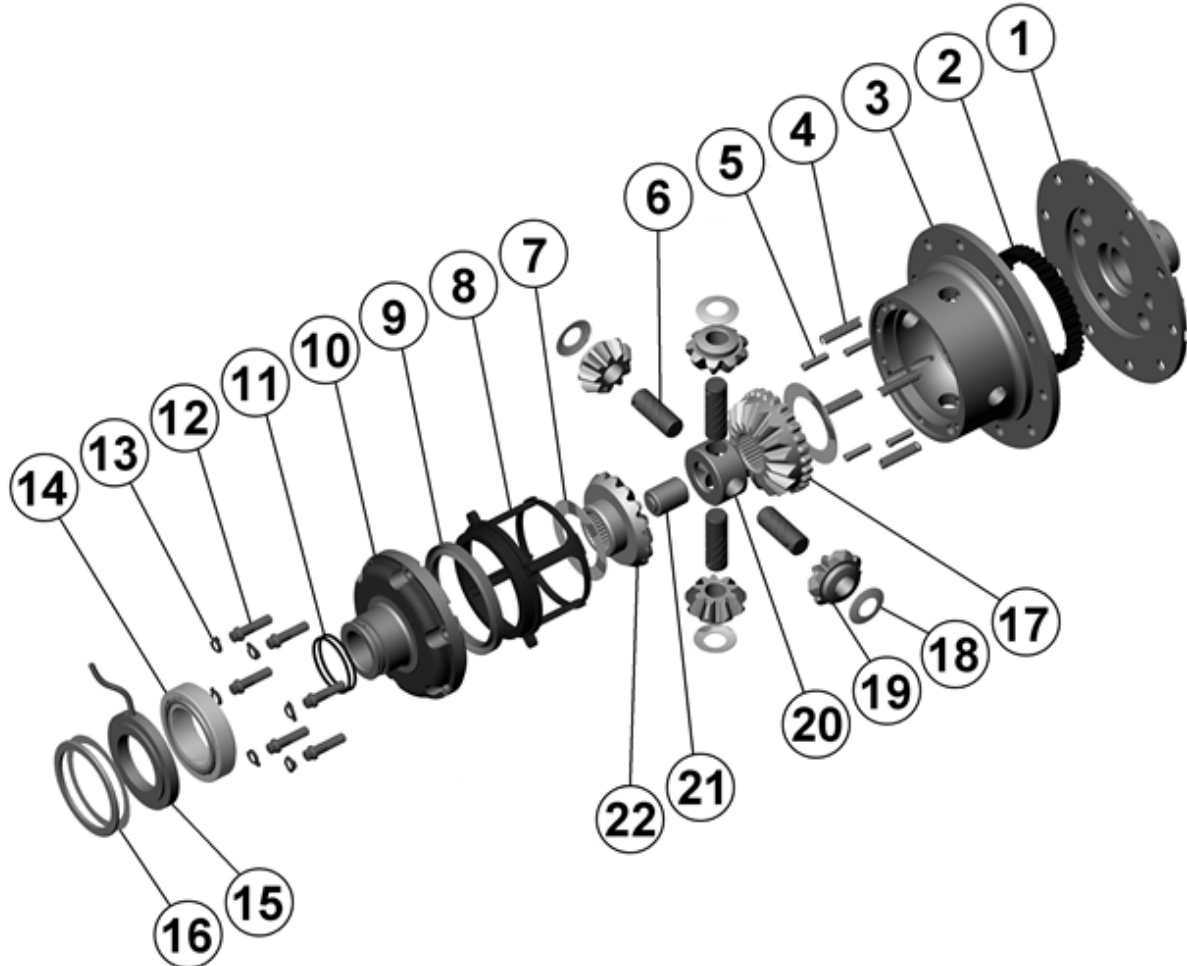
- 1 For replacement O-rings use only BS030 Viton 75.
- 2 For replacement bearing use Timken part # LM603049 / LM603011.
- 3 Available only as complete 6 gear set # 728B401.
- For 2.73:1 ratio refer to RD47 ([Section 2.47](#)).

RD60

AMC Model 20,3.07 & UP

****THIS MODEL WAS SUPERSEDED BY RD186, CROSSED OUT PARTS NOT AVAILABLE**

EXPLODED DIAGRAM



SPECIFICATIONS

Axle Spline	29 tooth, Ø31.8mm [1.25"]
Ratio Supported	3.07:1 & up
Ring Gear ID	136.6mm [5.38"]
Ring Gear OD	225mm [8.9"]
Ring Gear Bolts	8 bolts on Ø165mm [6.50"]
Ring Gear Torque	88Nm [65 ft-lb]
Backlash	0.15-0.25mm [0.006-0.010"]
Bearing Cap Torque	88Nm [65 ft-lb]