

RD229

Nissan D23 RR, 34 Spline

PARTS LIST

ITEM #	QTY	DESCRIPTION	PART #	NOTES
1	1	BONDED SEAL	160702SP	
2	1	CLUTCH GEAR & WAVESPRING KIT	050906SP	
3	1	WAVESPRING	150706SP	
4	4	PINION THRUST WASHER	SEE NOTE	3
5	4	PINION GEAR	SEE NOTE	2
6	1	LONG CROSS SHAFT	060204SP	
7	1	SIDE GEAR	SEE NOTE	2
8	2	SIDE GEAR THRUST WASHER	SEE NOTE	3
9	1	DIFFERENTIAL CASE	013045SP	
10	1	COUNTERSUNK SCREW (PK OF 2)	200213SP	
11	1	RETAINING PIN SET (PK OF 4)	120601SP	
12	2	ADJUSTER NUT	NOT SUPPLIED	
13	1	SEAL HOUSING O-RINGS (PK OF 2)	160227SP	1
14	1	SEAL HOUSING KIT	081821SP	
15	2	TAPERED ROLLER BEARING	NOT SUPPLIED	
16	1	FLANGE CAP KIT	027345SP	
17	1	SPLINED SIDE GEAR	SEE NOTE	2
18	1	SPIDER BLOCK	070201SP	
19	2	SHORT CROSS SHAFT	060403SP	
*	1	BULKHEAD FITTING KIT (BANJO TYPE)	170114	4
*	1	AIR LINE (6mm DIA X 6m LONG)	170314SP	4
*	1	SOLENOID VALVE (12V)	180103	
*	1	SWITCH	180209SP	
*	1	SWITCH COVER (REAR)	180211SP	
*	1	CABLE TIE (PK OF 25)	180305	
*	1	OPERATING & SERVICE MANUAL	210200	
*	1	INSTALLATION GUIDE	2102229	

* *Not illustrated in exploded view*

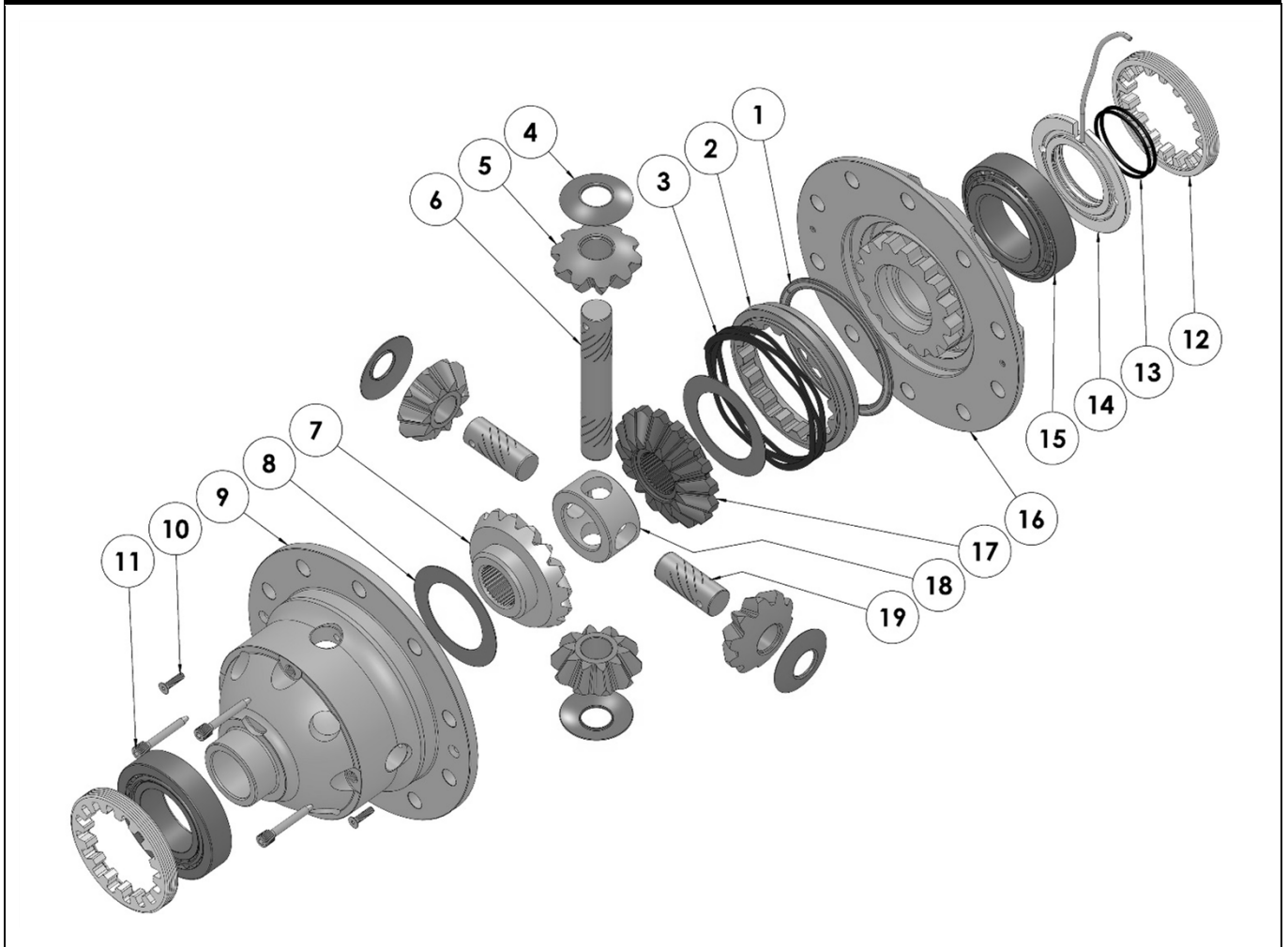
NOTES

- 1 For replacement O-rings use only BS138 Viton 75.
- 2 Available only as complete 6 gear set # 728H191.
- 3 Available only as complete thrust washer kit #730H01.
- 4 All diffs produced before serial #17070001 came with 5mm air connection system. For information contact ARB.

RD229

Nissan D23 RR, 34 Spline

EXPLODED DIAGRAM



SPECIFICATIONS

Axle Spline	34 tooth, Ø34.9mm [1.37"]
Ratio Supported	All
Ring Gear ID	134.0mm [5.28"]
Ring Gear OD	215mm [8.46"]
Ring Gear Bolts	12 bolts on Ø173.9mm [6.85"]
Ring Gear Torque	198Nm [146 ft-lb]
Backlash	0.15-0.20mm [0.006-0.008"]
Bearing Cap Torque	88Nm [65 ft-lb]

ARB Corporation Ltd • 42-44 Garden St Kilsyth VIC 3137 Australia
ARB 4X4 Accessories USA • 720 SW 34th St Renton WA 98057 USA
Australia & International Customer Service • +61 3 9761 6622
North America Customer Service • Toll Free 866 293 9078
www.arb.com.au (AUS & Int) www.arbusa.com (N. America)

