

**RD40**

GM 14 Bolt, 9.5", C-clip

**\*\*THIS MODEL WAS SUPERSEDED BY RD197, CROSSED OUT PARTS NOT AVAILABLE**

### PARTS LIST

ITEM #	QTY	DESCRIPTION	PART #	NOTES
01	1	FLANGE CAP	022001	
02	1	CLUTCH GEAR	050402	
03	1	DIFFERENTIAL CASE	012101	
04	1	RETURN SPRINGS (PK OF 4)	150101SP	
05	1	RETAINING PIN SET (PK OF 4)	120401SP	
06	1	LONG CROSS SHAFT	060901	
07	1	PISTON	040501SP	
08	1	BONDED SEAL	160703SP	
09	1	CYLINDER CAP	031001	
10	1	SEAL HOUSING O-RINGS (PK OF 2)	160211SP	1
11	1	CYL CAP RETAINING BOLT (PK OF 8)	200204SP	
12	1	TAPERED ROLLER BEARING	160110	2
13	1	SEAL HOUSING KIT	080901SP	
14	1	SPLINED SIDE GEAR	SEE NOTE	3
15	2	PINION GEAR	SEE NOTE	3
16	1	PINION THRUST WASHER (PK OF 4)	151104SP	
17	1	SIDE GEAR	SEE NOTE	3
18	1	S GEAR THRUST WASHER (PK OF 2)	151004SP	
*	1	'C' CLIP KIT	GCK002	
*	1	M6 RETAINING BOLT	200204	
*	1	LOCK WASHER	4581059	
*	1	PIN WITHDRAWAL TOOL	1201T	
*	1	BULKHEAD FITTING KIT (O-RING TYPE)	170111	
*	1	PUSH-IN FITTING (5mm to 1/8" BSPP)	170201SP	
*	1	AIR LINE (5mm DIA X 6m LONG)	170301SP	
*	1	SOLENOID VALVE (12V)	180103	
*	1	SWITCH	180209SP	
*	1	SWITCH COVER (REAR)	180211SP	
*	1	CABLE TIE (PK OF 25)	180305	
*	1	OPERATING & SERVICE MANUAL	210200	
*	1	INSTALLATION GUIDE	210240	

\* *Not illustrated in exploded view*

### NOTES

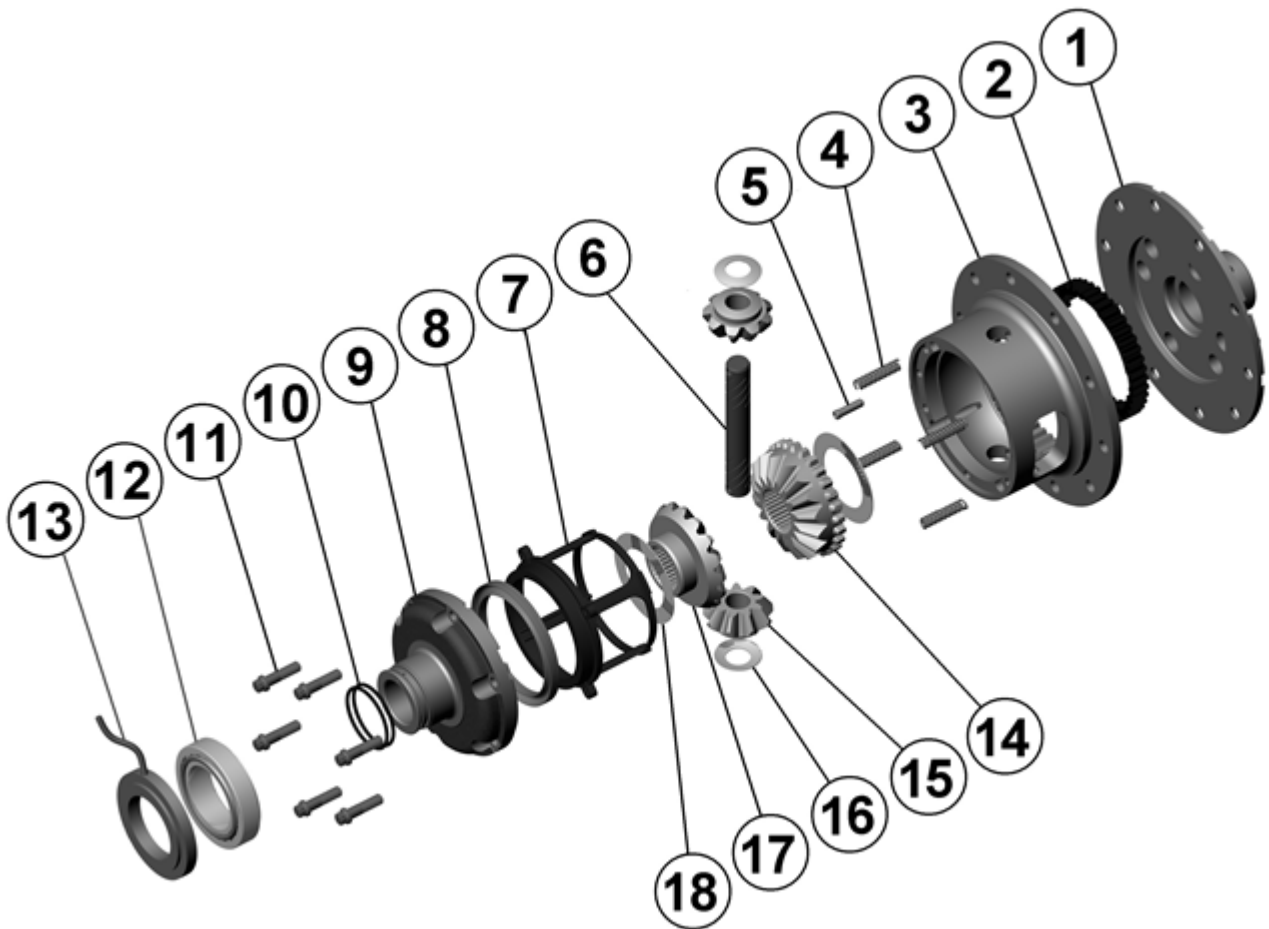
- 1 For replacement O-rings use only BS135 Viton 75.
- 2 For replacement bearing use Timken part # JLM506849 / JLM506810.
- 3 Available only as complete 4 gear set #728E022C
- Ring gear bolts are M12x1.5mm left-hand thread, and must be removed in a clockwise direction.
- Variation in OE casting may require modification to the bearing cap to suit lock tab position.

**RD40**

GM 14 Bolt, 9.5", C-clip

**\*\*THIS MODEL WAS SUPERSEDED BY RD197, CROSSED OUT PARTS NOT AVAILABLE**

### EXPLODED DIAGRAM



### SPECIFICATIONS

Axle Spline	33 tooth, Ø34.8mm [1.37"]
Ratio Supported	All
Ring Gear ID	152.9mm [6.02"]
Ring Gear OD	241mm [9.50"]
Ring Gear Bolts	12 bolts on Ø181mm [7.13"]
Ring Gear Torque	102Nm [75 ft-lb]
Backlash	0.15-0.25mm [0.006-0.010"]
Bearing Cap Torque	108Nm [80 ft-lb]